

# PluroGel is ideal for these tissue types



## Sloughy Wounds (Superficial or Deep)

- Minimally adherent non-viable tissue
- Yellow, gray or cream colored
- May have periwound maceration
- Light to Moderate exudate



## Thin Eschar

- Yellow or dark brown with dry edges
- Edges may be adherent or non-adherent
- Usually dry or minimally exudative



## Granulating Cavity/ Tunneling

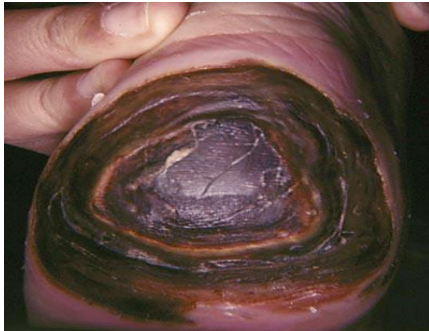
- Red, pink tissue
- Not progressing thru wound healing



## Stalled Wounds

- Red, pink healthy tissue
- May be Friable (bleeds easily when touched)
- Not progressing thru wound healing

# PluroGel is **NOT** recommended for



## Stable Eschar

- No drainage
- Leave alone.
- Let heal from below.



## Eschar with (pink edges = detached)

- Due to Pressure injury or poor arterial blood flow?
- If pressure (ok to use PG)
- If poor perfusion, do not use PluroGel



## Dry Closed Wound

- Use Hydraguard



## Dry Gangrene or Avascular

- Depends on location
- Lower extremity leave alone /Consult surgeon



## Epibole

- Rolled edges, undermining
- Consider Puracol
- Consult wound doc for sharps debridement