

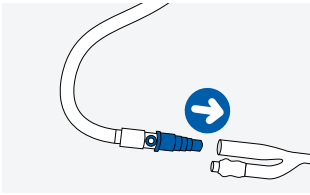
User Guidelines

UROSID® M5 Urine Meter with Exchange Bag

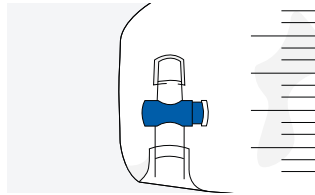
ASID  **BONZ**
A MEDLINE COMPANY



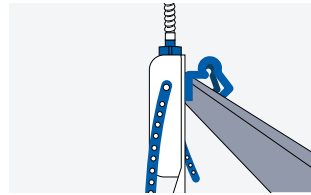
Preparation



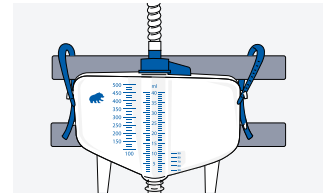
- Ensure the urinary catheter remains sterile.
- After removing the sealing cap, attach the universal stepped connector to the urinary catheter.



- Ensure the drain valve is closed and correctly housed.

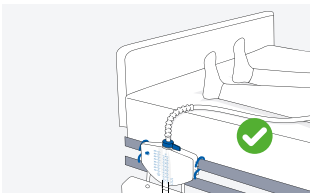


- Use the bed hanger to attach the device, in a vertical position, near the end of the bed.

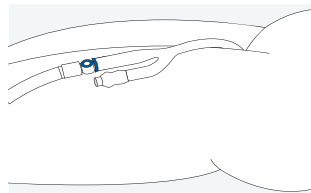
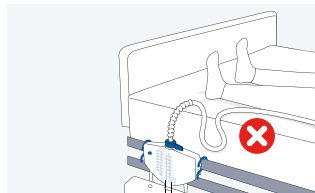


- Use the plastic straps and string as additional securement.

Correct setup and placement

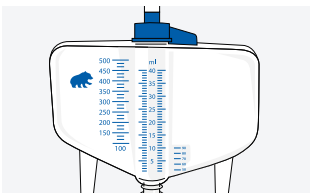


- Ensure the device remains in a vertical position, near the end of the patient's bed, with no kinks or loops in the tubing.

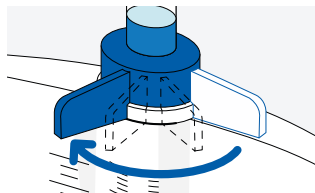


- The needle-free sample port should lie flat, with the urinary catheter placed across the patient's thigh.

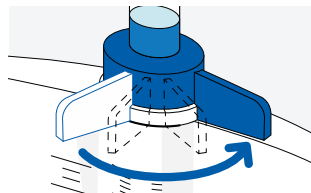
Monitoring urine output



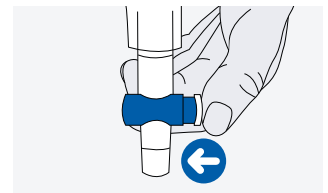
- Using the easy-to-read scale on the chamber of the UROSID M5, make a note of the urine output of your patient.



- Open the dark-blue valve on top of the chamber completely, as indicated, to allow the urine to drain into the Exchange Bag.

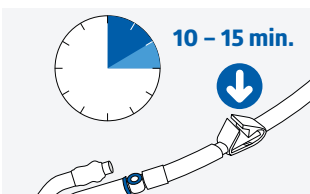


- Close the dark-blue valve completely, once the chamber is drained to continue monitoring the urine.

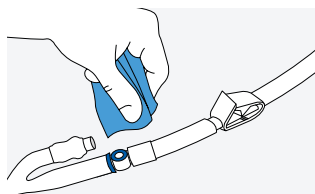


- Open the drain valve to empty the exchange bag, ensuring you close and re-house it once complete.
*For Exchange Bag with Drain Valve only

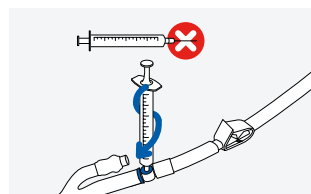
Urine sampling procedure



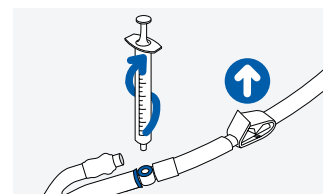
- Position the tube clamp close to the needle-free sample port.
- Before sampling, ensure the tube clamp is fully closed for 10 to 15 minutes (or until an adequate amount of urine for sampling is visible).



- Clean the needle-free sample port, applying local protocol for sterility.



- Insert the entire Luer tip of the syringe to draw each sample.



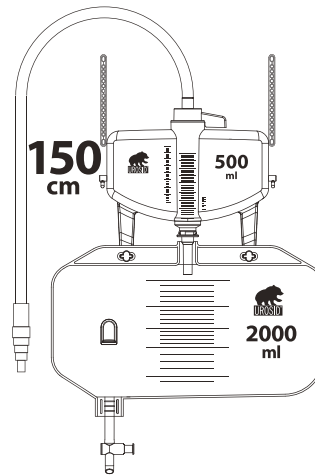
- Remove the syringe after taking the sample, and remember to re-open the clamp.

Exchange Bag Systems

The UROSID® Urine Measurement System with Exchange Bag is available in two different versions to meet your specific needs. Medline offers a variant of the urine meters with a drainage valve, which gives clinicians the option to empty the exchange bag through the valve. For the alternative variant without a drainage valve, it is necessary to replace the bag once it is filled to capacity.

How does it work?

After measuring the urine collected in the chamber, open the tap on the top of the chamber. This will allow the urine to drain into the exchange bag positioned below.



UROSID® M5 Urine Meter with Exchange Bag

REF 69050x-N

Reference	Bag volume (ml)	Urine meter volume (ml)	Tubing length (cm)	Feature	Units (ea)
690500-N	2,000	500	150	With cross valve	10
690501-N	2,000	500	150	Without drainage valve	10

Exchange Bag for UROSID® M5 Urine Meter

REF 69050x-BAG

Reference	Bag volume (ml)	Feature	Units (ea)
690500-BAG	2,000	With cross valve	50
690501-BAG	2,000	Without drainage valve	50

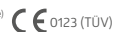


For more information on our products, please contact your account manager or visit us at: www.medline.eu/uk

690500-N, 690501-N, 690500-BAG, and 690501-BAG are class I sterile medical devices with measurement function. These products are intended to be used by healthcare professionals. Before use, please consult instructions and precautions on the corresponding labelling.



Shanghai International Holding Corp.GmbH (Europe)
Eiffelstraße 80
20537 Hamburg, Germany



We reserve the right to correct errors that may occur in this document.

© 2023 Medline is a registered trademark of Medline Industries, LP. Three Lakes Drive, Northfield, IL 60093, USA. ML1432_EN 11/2023.