



PluroGel uses a gentle, non-sensitising formula to soften, loosen and trap debris in the wound, preparing it for the next stages of wound healing.

## Ordering Information

Item No.	Item Description	Qty/Case
0102-170050	PluroGel 50 g jar	24/case
0102-170400	PluroGel 400 g jar	6/case

Item No.	Item Description	Qty/Case
0102-100050	PluroGel PSSD 50 g jar	24/case
0102-101050	PluroGel PSSD 50 g tube	12/case
0102-100400	PluroGel PSSD 400g jar	6/case

- PluroGel PBWD (references 0102-170050 and 0102-170400) is a medical device in class IIa non-sterile.
- PluroGel PSSD (references 0102-100050, 0102-101050 and 0102-100400) with silver sulfadiazine 1% is a medical device in class III.

These products are intended to be used by healthcare professionals. Before use, consult instructions and precautions on the corresponding labelling.

This brochure should not take the place of medical advice from your physician or healthcare provider.



Medline Industries, Inc.  
This educational pamphlet is provided to your healthcare provider by Medline.

We reserve the right to correct any errors that may occur within this brochure. ©2018 Medline Industries, Inc. All rights reserved. Medline is a registered trademark of Medline Industries, Inc. ML637-EN01/OS 02/2018.



ADVANCED  
WOUND CARE

# PLUROGEL®

BURN AND WOUND DRESSING

## Application Guide

## Caring for Your Wound with PluroGel Burn and Wound Dressing

### To Apply PluroGel:

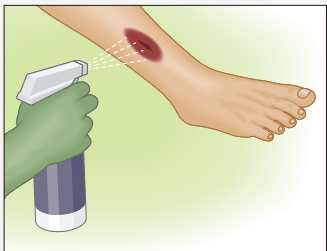


1. Remove PluroGel from the jar using a sterile applicator.



2. Apply PluroGel onto a sterile secondary dressing. A thickness of 1 – 2 mm is recommended for a lightly draining wound. A thickness of 3 – 5 mm is recommended for a moderately draining wound.

### To Remove PluroGel:



PluroGel is 100% water soluble and can be removed with saline, water or wound cleanser.



### What to Expect When Using PluroGel:

#### To apply PluroGel, spread it onto a secondary dressing.

PluroGel may be applied directly to the wound; however, if the wound is draining, it may be difficult to spread evenly. For the easiest dressing change experience, spread it onto the secondary dressing prescribed by your physician.

#### Change daily or as needed to maintain a moist healing environment.

PluroGel is 100% water soluble. If your wound is draining and you can no longer see PluroGel present on the surface, then it is time to reapply.

#### What is that white residue?

You may notice a white residue on the intact skin surrounding your wound. This is simply PluroGel that has dried; it is not harmful. Rinse it away with wound cleanser, saline or water when you change your dressing.

## A Gentle Option for Wound Healing

The first step in preparing for wound closure is preparing a healthy wound bed. PluroGel Burn and Wound dressing utilises a biocompatible, non-sensitising material to soften, loosen and trap wound debris for removal, and it facilitates the creation of a healthy wound healing environment.

Wound healing can sometimes feel like a long and difficult task. PluroGel's gentle formula is designed to help you along your journey. It is vital that you actively work with your healthcare professional and follow all instructions.

## Promoting Patient Comfort

#### 100% water soluble

PluroGel softens wound debris and allows it to easily rinse off during dressing change, facilitating a gentle dressing change experience.

#### Non-ionic and non-irritating

PluroGel's gentle, non-sensitising formula is soothing and comfortable.

#### Better adherence to wounds

PluroGel maintains its consistency, enabling it to remain on the wound bed for better protection.