



# INSTRUCTIONS FOR USE CLIPPERS & BLADES

## IMPORTANT TO KNOW

The clipper needs to be handled with the blade flat on the patient skin.

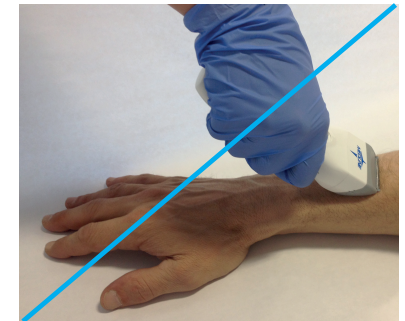
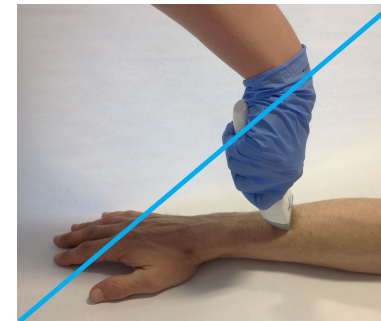
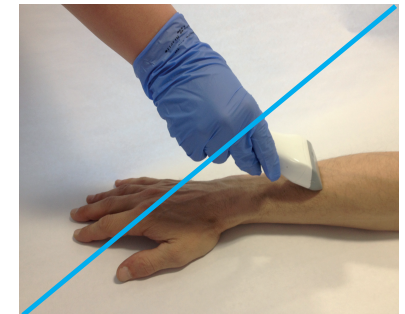
A steady and slight pressing must be applied on the clipper when shaving.

Shaving movements must be short and light.

For better results it is recommended to shave against the hair.

If the clipper is used in a different way that explained before, there might be potential risks of cuts and abrasions.

Instructions of Use must be read before using the clipper.



We reserve the right to correct any errors that may occur within this brochure.

© 2016 Medline is a registered trademarks of Medline Industries, Inc. One Medline Place, Mundelein, IL 60060, USA. ML287-EN02/EN 11/2016.

CE **IC REP** Medline International France SAS,  
5 rue Charles Lindbergh,  
44110 Châteaubriant, France