

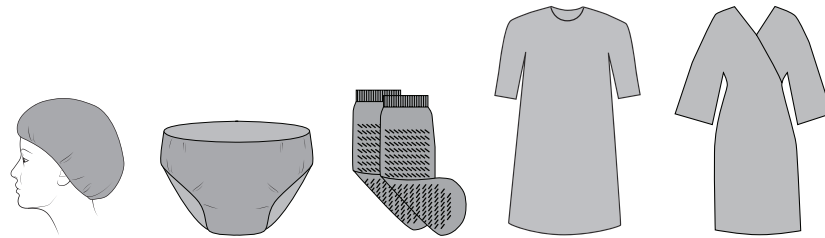
REF **KIT1035XXL**

x40

(01) 5088827742910 7(17) YYMM28(10) YYMRPxxx

- en Patient kit
- fr Kit patient
- de Patienten-Set
- it Kit Paziente
- es Kit paciente
- pt Kit de paciente
- nl Patient kit
- sv Set patientklädsel, engångs
- da Patient sæt
- fi Potilaspakkaus
- no Pasientsett
- hu Páciens készlet
- ro Kit pacient
- tr Hasta kiti
- pl Zestaw dla pacjenta
- cs Pacientský balíček

2XL



LOT



LAB180804
Made in China

Medline International France SAS
5 rue Charles Lindbergh, 44110 Châteaubriant, France
Distributed in Australia by: Medline International Two Australia Pty. Ltd., Sydney, Australia

Label information:

Size: 13x18cm (7"x5")

Color: coated label, black

YYYY-MM(-DD): date format to be displayed next to manufacturing date and shelf life symbols

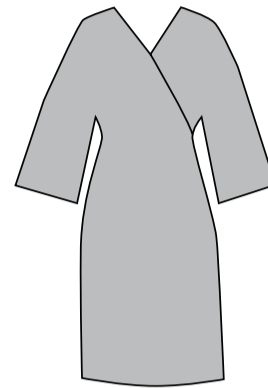
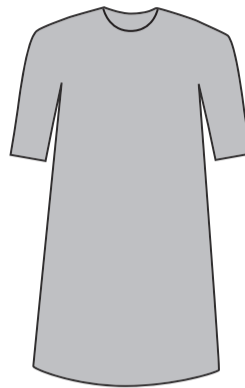
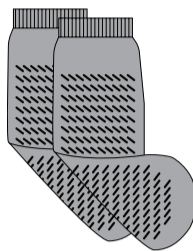
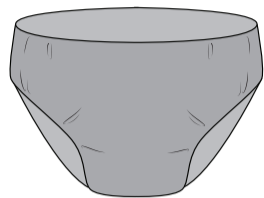
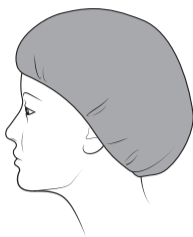
Barcode information:

Created according to GS1-128 EAN, printed in black

(01) GTIN provide by Medline

(17)YYMM28: Expiration date: 5 years guarantee, display as 4 years, 11 months, end of month (unless otherwise stated into GPI or FOC)

(10)YYMRPxxx: lot number: YY for Year of Manufacturing, M for Month of Production, R for Product Specification revision, P for Plant of Manufacturing, xxx for order incrementation.

MEDLINE**REF KIT1035XXL****2XL****en Patient kit**

x1 clip cap (1)(4) **CE**
 x1 underwear (2)
 x1 pair of non-slip socks (2)
 x1 patient gown (2)
 x1 kimono (2)

nl Patient kit

x1 muts (1)(4) **CE**
 x1 slip (2)
 x1 sokken (antislip) (2)
 x1 patientjas (2)
 x1 kimono jas (2)

ro Kit pacient

x1 boneta unica folosinta (1)(4) **CE**
 x1 lenjerie intima (2)
 x1 ciorapi cu doua benzi antiderapante (2)
 x1 halat pacient (2)
 x1 halat (2)

fr Kit patient

x1 charlotte à clip (1)(4) **CE**
 x1 sous-vêtements (2)
 x1 paire de chaussettes anti-dérapantes (2)
 x1 chemise d'opéré (2)
 x1 peignoir (2)

sv Set patientklädsel engångs

x1 engångsmössa (1)(4) **CE**
 x1 underkläder (2)
 x1 dubbel sula (2)
 x1 patientrock (2)
 x1 rock, Kimono (2)

tr Hasta kiti

x1 Kep (1)(4) **CE**
 x1 İç çamaşır (2)
 x1 Çorapları (2)
 x1 Hasta gömleği (2)
 x1 Kimono gömlek (2)

de Patienten-Set

x1 falthaube (1)(4) **CE**
 x1 unterhose (2)
 x1 anti-rutsch-socken (2)
 x1 patientenkittel (2)
 x1 kimono-kitte (2)

da Patient sæt

x1 hue (1)(4) **CE**
 x1 par underbukser (2)
 x1 antiskrid sok (2)
 x1 patientkittel (2)
 x1 kimono (2)

pl Zestaw dla pacjenta

x1 czepek (1)(4) **CE**
 x1 majtki (2)
 x1 skarpetki antypoślizgowe (2)
 x1 koszula (2)
 x1 fartuch typu Kimono (2)

it Kit Paziente

x1 cuffietta (1)(4) **CE**
 x1 mutandina (2)
 x1 calzino antiscivolo (2)
 x1 camice paziente (2)
 x1 camice kimono (2)

fi Potilaspakkaus

x1 myssy (1)(4) **CE**
 x1 alushousut (2)
 x1 sukat (2)
 x1 leikkausvaate (2)
 x1 kimono takki (2)

cs Pacientský balíček

x1 clip čepice (1)(4) **CE**
 x1 spodní prádlo (2)
 x1 přezuvky s dvojitou podrážkou (2)
 x1 pacientský plášť (2)
 x1 kimono plášť (2)

es Kit paciente

x1 gorro (1)(4) **CE**
 x1 ropa interior desechable (2)
 x1 alcatines antideslizantes (2)
 x1 bata paciente (2)
 x1 bata tipo kimono (2)

no Pasientsett

x1 hårnett (1)(4) **CE**
 x1 underbukse (2)
 x1 dobbel såle slippers (2)
 x1 frakk (2)
 x1 kimono (2)

pt Kit de paciente

x1 touca (1)(4) **CE**
 x1 cueca (2)
 x1 meia anti derrapante (2)
 x1 bata de paciente (2)
 x1 bata tipo quimono (2)

hu Páciens készlet

x1 harmonika - sapka (1)(4) **CE**
 x1 alsónadrág (2)
 x1 körkörösön csúszásmentes zokni (2)
 x1 köpeny (2)
 x1 kimonó fazonú köpeny (2)

**LOT**

(01) 0088827742910 2(17) YYMM28(10) YYMRPxxx

LAB180803

Medline International France SAS

5 rue Charles Lindbergh, 44110 Châteaubriant, France

Distributed in Australia by: Medline International Two Australia Pty. Ltd., Sydney, Australia

Label information:

Size: 21x29,7cm

Color: uncoated label, black

YYYY-MM(-DD): date format to be displayed next to manufacturing date and shelf life symbols

Warnings to be printed at the back of the insert label: LAB180674

Barcode information:

Created according to GS1-128 EAN, printed in black

(01) GTIN provide by Medline

(17)YYMM28: Expiration date: 5 years guarantee, display as 4 years, 11 months, end of month (unless otherwise stated into GPI or FOC)

(10)YYMRPxxx: lot number: YY for Year of Manufacturing, M for Month of Production, R for Product Specification revision, P for Plant of Manufacturing, xxx for order incrementation.